

## Replacing Lamps



1 Remove the cage situated at the bottom of the trap by unscrewing it anti-clockwise



2 To separate the middle housing place the trap upside down and push the 2 small grooves on the fan casing outwards. This will release it from the outer housing.



3 Place both housings side by side without disconnecting the cable.



4 Carefully unplug the lamps from their sockets and replace with new ones. Reattach the housing and cage.

## Attaching CO2 container



1 Using the Velcro supplied, please stick one side of the Velcro coin, on the centre of the mosquito cage as shown on the picture above.



2 Unscrew the bottle top and fill half full with water. Place 1xCO2 tablet inside. Screw the top back on to the bottle.



3 To allow the CO2 to be released. Press one side of the cap downwards as shown in the picture above.



4 To fix the container to the bottom of the cage. Stick the remaining side of the Velcro Coin to the underside of the bottle. Then place bottle onto the bottom of the cage to fix

# VECTORTRAP

[www.vectorfog.com](http://www.vectorfog.com)

## Instruction Manual



## T 10,15 FLY TRAP

**VECTOR FOG**

[www.vectorfog.com](http://www.vectorfog.com)

VectorFog™. Unit 3 Riverside Park, Dogflud Way, Farnham, GU9 7UG United Kingdom

Effective in luring mosquitoes with Ultra Violet light and CO2 

# VECTORTRAP

www.vectorfog.com

## VECTORTRAP™ ADVANCED MOSQUITO TRAP

Mosquitoes can be a real nuisance and their bites can cause irritation of the skin including itching, redness and swelling. Mosquitoes are also vector carriers for many diseases affecting humans and livestock. These include dengue, Yellow Fever and Malaria.

Effective up to 150m<sup>2</sup>, the Vectortrap™ T10&15 can help control the population of mosquitoes and other small flying insects such as fruit flies and midges in food restaurants, shops, public facilities, patio areas, greenhouses, stables and gardens.

## HOW DOES IT WORK?

The vectortrap™ T10&15 trap works by luring the flying insects to the trap via UV light & CO<sub>2</sub> gas which replicates human or animal breath. Once the insects are in catching distance, an electric fan sucks the insects into a mesh net.

This UV system is also less noisy and cleaner than conventional Ultraviolet zap-pers. Our trap is ideal for bars & restaurants, patio areas and greenhouses.

## SPECIFICATIONS

Model	T10	T15
Size	Ø24x32cm	Ø24x32cm
BL lamps	4Wx2(Quartz)	4Wx2(Quartz)
Electricity	220V, 60HZ	220V, 60HZ
Effective Area	99m <sup>2</sup> ~150m <sup>2</sup>	99m <sup>2</sup> ~150m <sup>2</sup>
Consumption	22W	22W
Material	ABC	ABC

## FEATURES

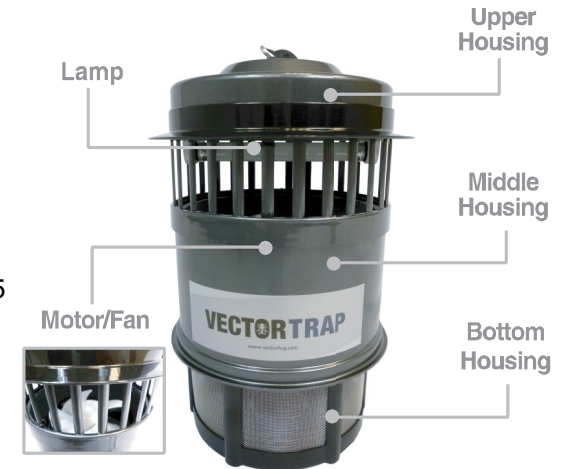
1. Designed for indoor and Outdoor use
2. Ultra Violet and CO<sub>2</sub> Lure
3. Low Noise
4. Easy to set up

## CAUTION

1. Keep out of reach of children
2. Disconnect power before cleaning or servicing the trap.
3. Do not hang trap from the power cord.
4. Do not immerse the trap in water.
5. Do not operate the trap with a damaged power cord or plug.
6. Plug the trap correct voltage supply
7. Read and follow the instructions in this manual before operating the Trap.

## WHERE TO PLACE THE TRAP

1. The Vectortrap T10&15 can be used for indoor or outdoor.
2. Place the trap in a shaded area protected from strong wind.
3. Using the wall hook and chain provided hang the Vectortrap 1.5 ~ 2m from the ground.



## FITTING INSTRUCTIONS

1. Remove the trap from the carton box.
2. Once in place, unscrew the bottom housing (mesh cage) and place the glue board on the bottom.
3. Following the instructions for adding the CO<sub>2</sub> on the back of this manual, fix the bottle to the bottom housing as shown.
4. Once the glue board and CO<sub>2</sub> canister are fixed to the bottom housing, screw the bottom housing back in place.
5. Plug the trap to the mains.